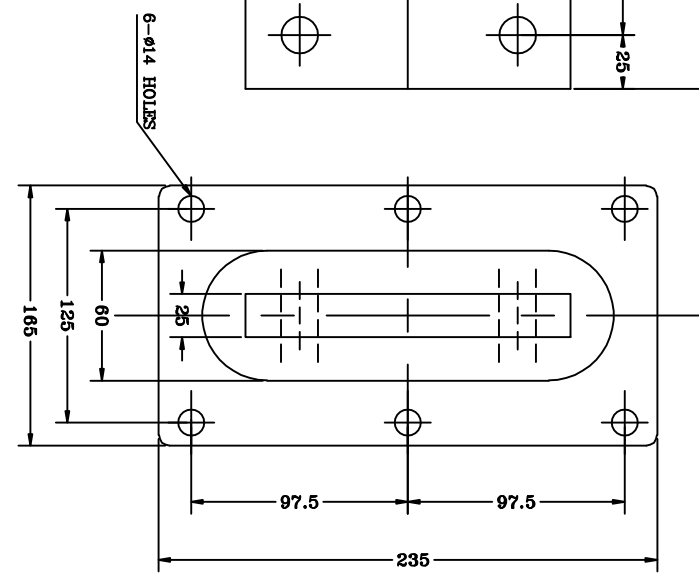
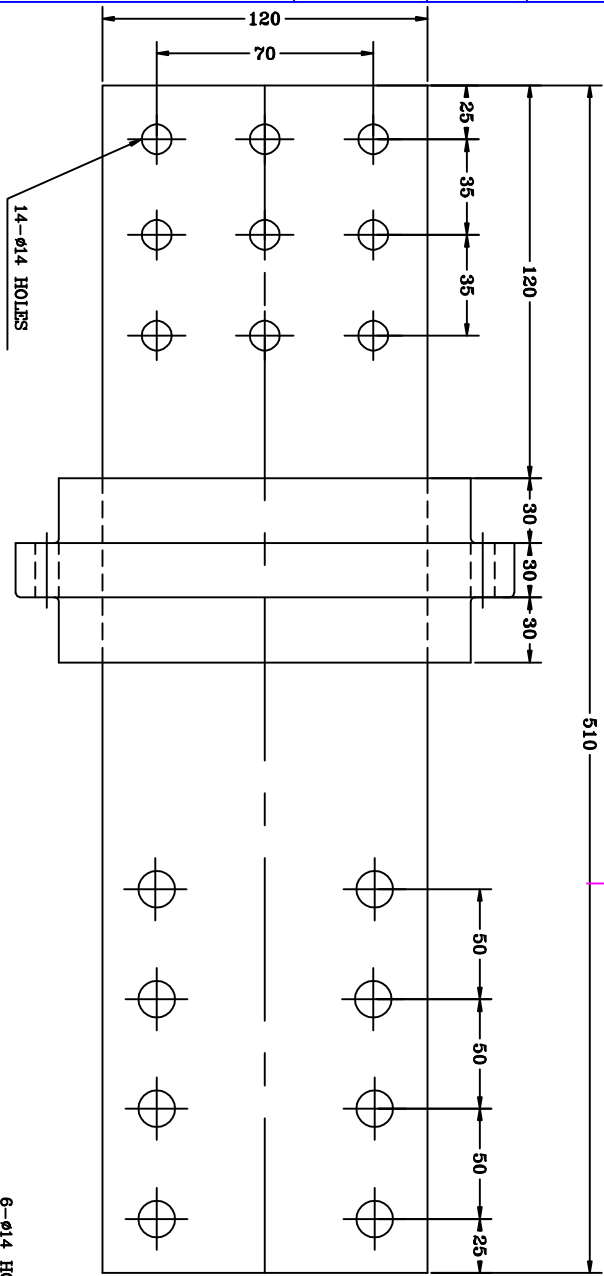


1	2	3	4
RevNo	Revision note	Date	Signature
			Checked




NOTES:-

- 1 END COPPER PALM WILL BE ELECTRONNED 12 TO 15 MICRONS.
- 2 ELECTROLYTIC COPPER WITH HIGH ELECTRICAL CONDUCTIVITY.
- 3 COLOUR BRICK RED.
- 4 ALL DIMENSION ARE IN MM.

ELECTRICAL SPECIFICATION

- 1 RATED VOLTAGE.....1.1KV
- 2 DRY FLASHOVER VOLTAGE.....5 KV
- 3 MINIMUM CURRENT CAPACITY.....4000 AMP.

01	1.1 kv, 4000A	DISCRPTION		DRN.	SGN	DATE
TYPE		EPOXY RESINE CAST BUSHING		CHD.	AP	
		ITEM CODE: FF0103		APPD.		
		MANUFACTURER Fibre & Fibre Glass Products 250/7, MAGAZINE HOUSE G.I.D.C. MAKARPURA, VADODARA - 380010		DRAWING NO.: FFGP/013-A/10-11		Sheet Edition 1/1 0
						REV 01

A B C D E F

1 2 3 4