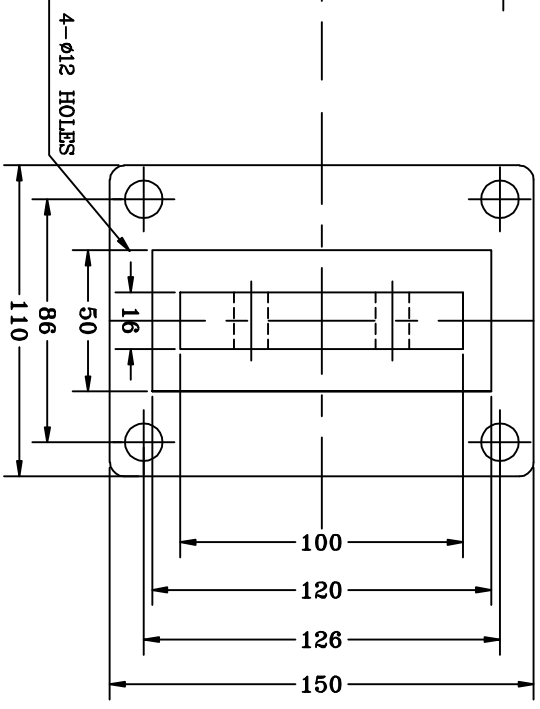
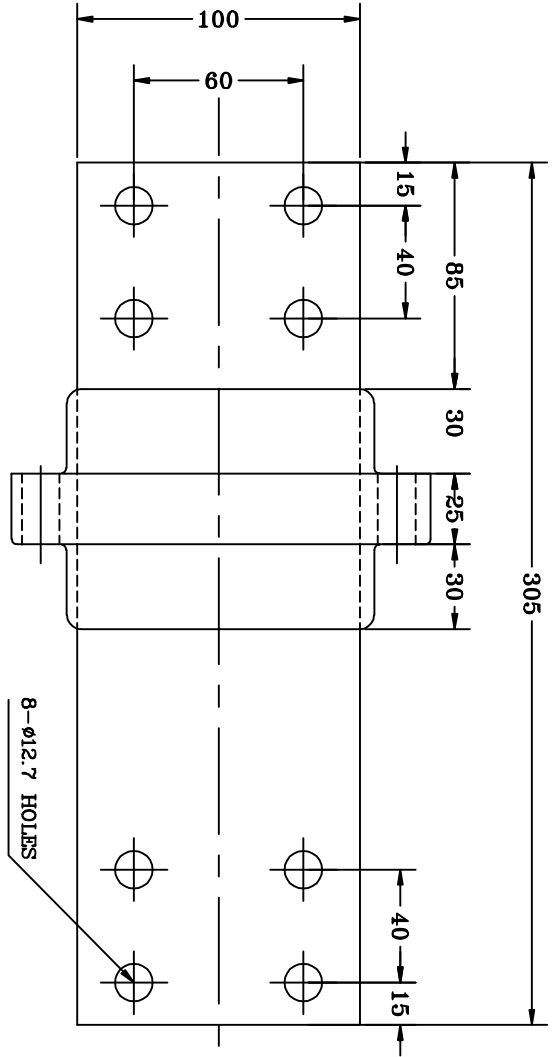


1	2	3	4
RevNo	Revision note	Date	Signature
			Checked



ELECTRICAL SPECIFICATION IS: 2099-1986

1 RATED VOLTAGE.....1.1KV

2 DRY FLASHOVER VOLTAGE.....5 KV

3 MINIMUM CURRENT CAPACITY.....2500 AMP.

NOTES:-


1 END COPPER PALM WILL BE ELECTRONNED 12 TO 15 MICRONS.

2 ELECTROLYTIC COPPER WITH HIGH ELECTRICAL CONDUCTIVITY.

3 COLOUR BRICK RED.

4 ALL DIMENSION ARE IN MM.

01	1.1 kv, 2500AMP	DISCRIPITON					
TYPE		EPOXY RESINE CAST BUSHING					
		ITEM CODE: FF0052					
			DRN.	SIGN	DATE		
			CHD.	TANVT	05/03/08		
			APPD.	AP	-		

	MANUFACTURER Fibre & Fibre Glass Products 250/7, MAGAZINE HOUSE G.I.D.C. MAKARPURA, VADODRA- 390010	DRAWING NO.: FRGP-032/08-09	Sheet Edition 1/1	REV 0