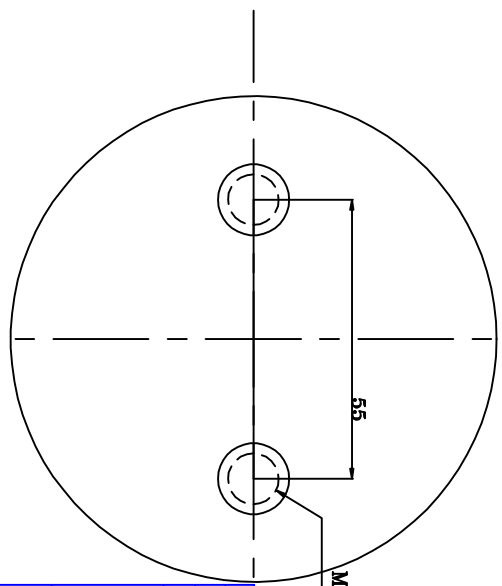
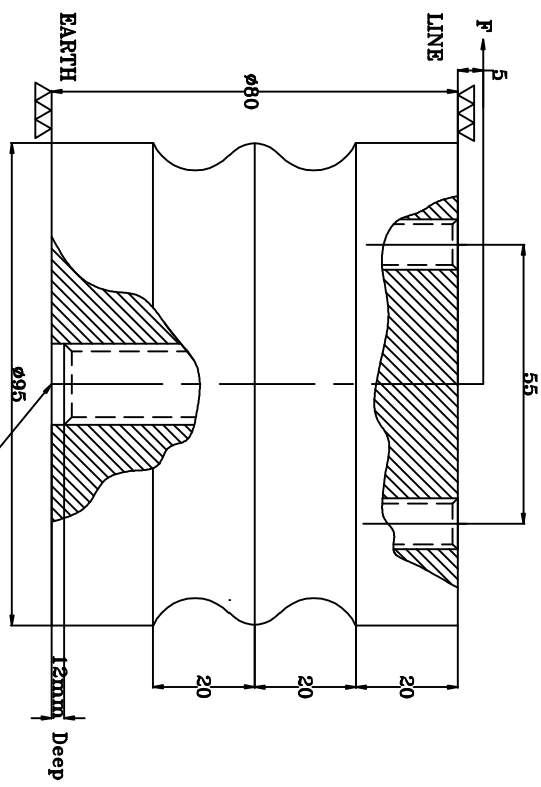


Revision note	Date	Signature	Checked
---------------	------	-----------	---------



**ELECTRICAL SPECIFICATION IS:9431-1979**

- 1 ONE MINUTE DRY WITHSTAND VOLTAGE.....27kV
- 2 IMPULSE WITHSTAND VOLTAGE.....60kV
- 3 DRY FLASHOVER VOLTAGE.....50kV
- 4 CREEPAGE DISTANCE.....90mm
- 5 RATED VOLTAGE.....6.6kV

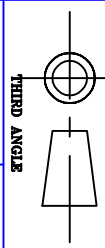
**MECHANICAL SPECIFICATION IS:9431-1979**

- 1 TENSILE FAILING LOAD.....3200kg.
- 2 COMPRESSION FAILING LOAD WITH STAND.....4000kg.
- 3 CANTILEVER FAILING LOAD F.....1250kg.
- 4 TORSION STRENGTH OF BODY WITHSTAND.....30Mkg.

**OTHERS**

- 1 COLOUR BRICK RED.
- 2 ALL DIMENSION ARE IN MM.

TYPE	DISCUSSION	6.6 kv	DRN.	SIGN	DATE
02	BRASS INSERTS				
01	M.S INSERT WITH WHITE ZINK PLATING				
EPOXY RESINE CAST INSULATOR			DRN.	TANVI	1/06/08
ITEM CODE: FF0085			CHD.	AP	-
			APPD.	-	-



**MANUFACTURER**  
 Fibre & Fibre Glass Products  
 250/7, MAGAZINE HOUSE  
 G.I.D.C. MAKARPURA,  
 VADODARA- 390010

**DRAWING NO.:**  
 FFGP-030/08-09

**Sheet Edition**  
 1/1 0

**REV**  
 01