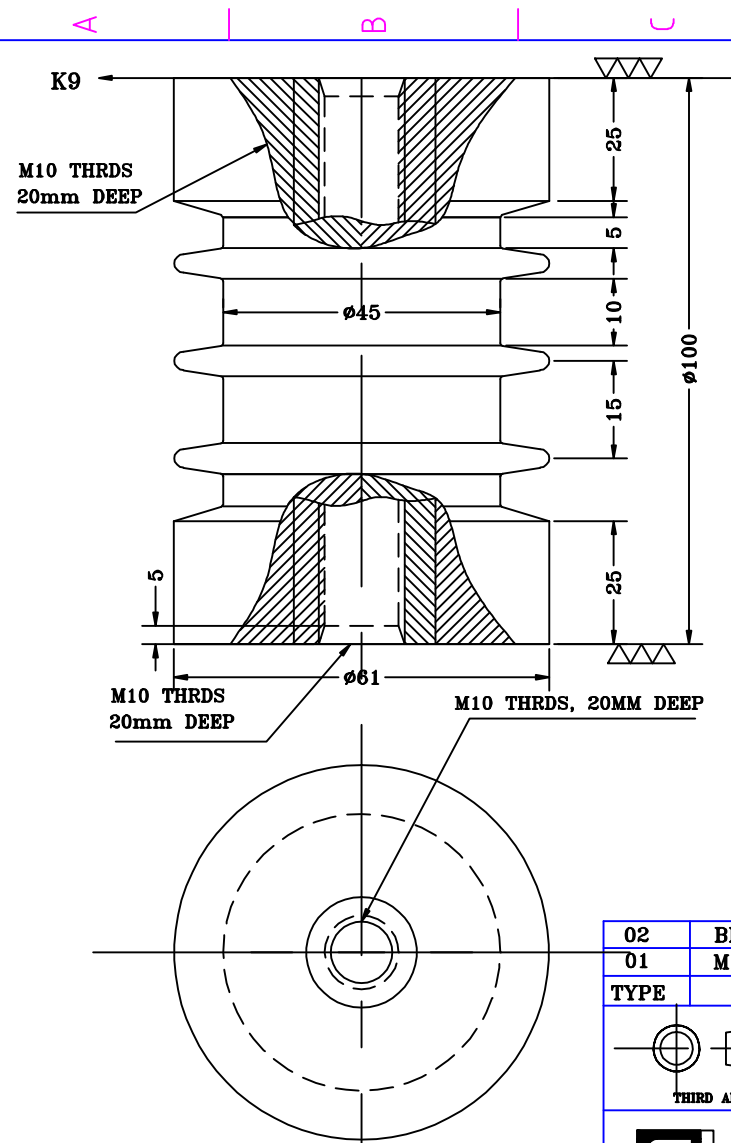


1 Revision note
2
3
4 Signature Checked
Date



MECHANICAL SPECIFICATION IS: 9431-1979

- 1 BODY.....40mKg.
- 2 CANTILEVER FALINGS LOAD.....850Kgs.
- 3 COMPERSSION FALLING LOAD.....8000Kgs.
- 4 TENSILE FALING LOAD.....1000Kgs.

ELECTRICAL SPECIFICATION IS: 9431-1979

- 1 RATED VOLTAGE.....6.6kv
- 2 IMPULSE WITHSTAND VOLTAGE.....50kv
- 3 ONE MINUTE WITH DRY WITHSTAND VOLATEGE.....47kv
- 4 CREEPAGE DISTANCE130mm

NOTES:-
*ALL DIMENTION ARE IN MM.

02	BRASS INSERTS				
01	M.S INSERT WITH WHITE ZINK PLATING				
TYPE	DISCRPTION				
<p>THIRD ANGLE</p>	6.6kv EPOXY RESINE CAST INSULATOR	SIGN	DATE		
	ITEM CODE: FF0080	DRN.	TANVI 24/03/09		
		CHD.	AP -		
APPD.	-	-			
	MANUFACTURER Fibre & Fibre Glass Products 250/7, MAGAZINE HOUSE G.I.D.C. MAKARPURA, VADODARA- 390010	DRAWING NO.:	Sheet	Edition	REV
	FFGP-024/09-10	1/1	0	1	

4
3
2
1