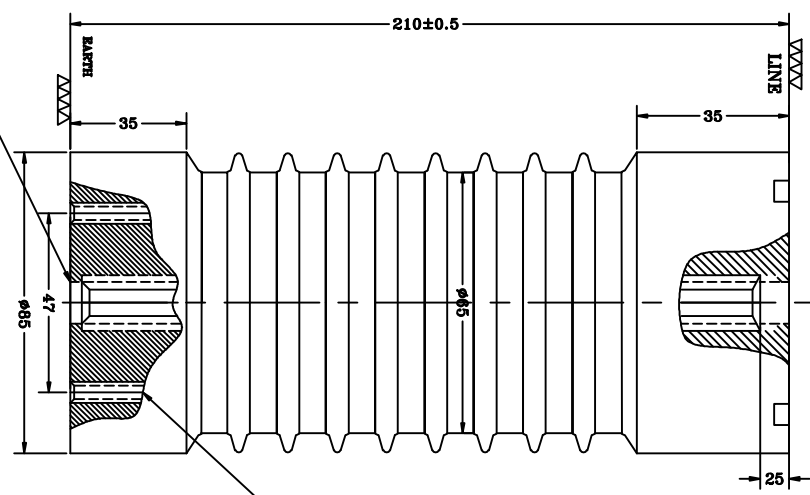
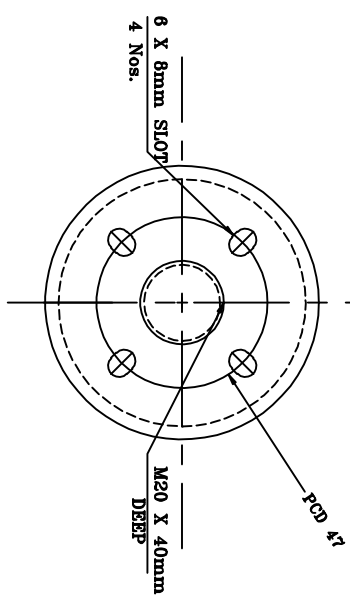


Revision note	Date	Signature	Checked
---------------	------	-----------	---------



MECHANICAL SPECIFICATION IS: 9431

- 1 TENSILE FAILING LOAD.....8000Kg.
- 2 COMPRESSION FAILING LOAD.....40000Kg.
- 3 CANTILEVER FAILINGS LOAD.....850Kg.

ELECTRICAL SPECIFICATION IS: 9431

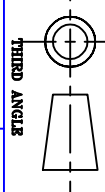
- 1 RATED VOLTAGE.....22kv
- 2 ONE MINUTE WITH DRY WITHSTAND VOLTAGE....50kv
- 3 IMPULSE WITHSTAND VOLTAGE.....125kv
- 4 CREPAGE DISTANCE.....360mm

NOTES:

- 1) ALL DIMENTION ARE IN MM.
- 2) INSULATOR REQUIRED WITH BRASS INSERT.

M10 X 25mm DEEP

02	BRASS INSERTS						
01	M.S INSERT WITH WHITE ZINK PLATING						
TYPE		DISCRIPPTON					
		22kv					
		EPOXY RESINE CAST INSULATOR					
		ITEM CODE: FF0075					
		DRN.	SIGN	DATE			
		CHD.	TANVI	30/03/07			
		APPD.	AP	-			



MANUFACTURER
Fibre & Fibre Glass Products
 280/7, MAGAZINE HOUSE
 G.L.D.C. NAKKAPURA,
 VADODARA- 390010

DRAWING NO.:
 FRGP-009/07-08

Sheet Edition
 1/1 0
REV
 0